



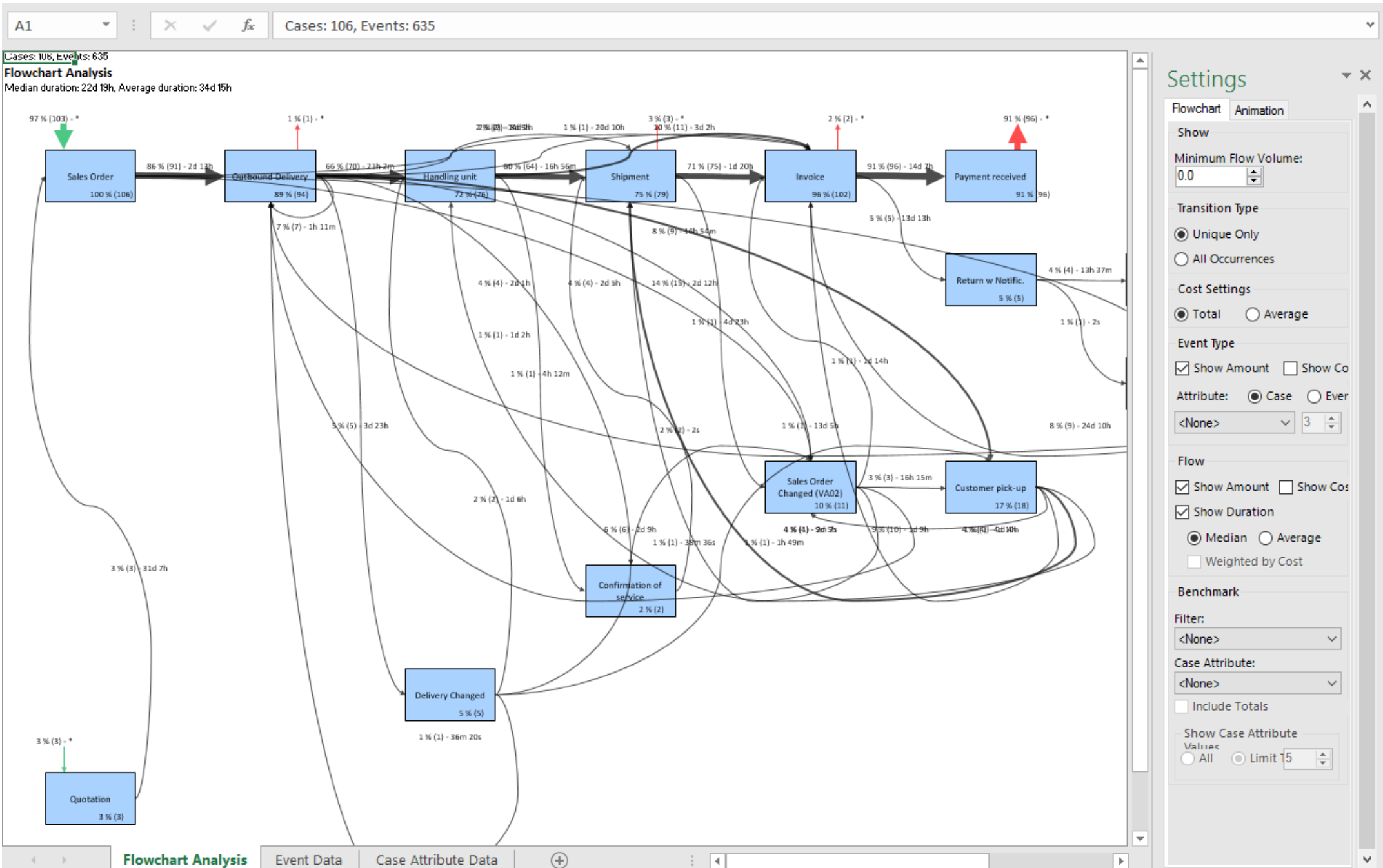
Βάση υπαρχόντων δεδομένων στα συστήματα IT π.χ.SAP

Ανάδειξη πραγματικής εικόνας των Διεργασιών, με όλες τις παραλλαγές και αποκλίσεις.

Ανάλυση και μετρήσεις στην αποδοτικότητα των Διεργασιών (διάρκεια, bottlenecks, ανάλυση αιτιών κλπ) επί πραγματικών δεδομένων.

Συνεχής απεικόνιση της απόδοσης των Διεργασιών. Γνωστοποιήσεις και ειδοποιήσεις κινδύνων μέσω e-mails & sms.

PPROCESS INTELLIGENCE



H31

✕ ✓ fx

	A	C	F	G	H	I	J	K	L	M
1	Cases: 106, Events: 635									
2	Influence Analysis									
3	Transitions=Purchase Order to Supplier->Invoice									
4										
5	<i>Total</i>		106	9	97	8%				
6	Case Attribute	Attribute Value	Cases #	Selected #	Compared #	Selected %	Difference %	Contribution #	Contribution %	
7	Product Group	Jeans	12	6	6	50%	42%	5	55%	
8	Region	Austin	18	3	15	17%	8%	1	16%	
9	Region	New York	27	3	24	11%	3%	1	8%	
10	Account Manager	Mary Wilson	18	2	16	11%	3%	0	5%	
11	Customer Group	Women	31	3	28	10%	1%	0	4%	
12	Account Manager	Linda Jackson	8	1	7	13%	4%	0	4%	
13	Account Manager	Paul Jones	9	1	8	11%	3%	0	3%	
14	Account Manager	Robert Miller	34	3	31	9%	0%	0	1%	
15	Account Manager	Patricia White	24	2	22	8%	0%	0	0%	
16	Customer Group	Men	36	3	33	8%	0%	0	-1%	
17	Region	Dallas	14	1	13	7%	-1%	0	-2%	
18	Customer Group	Kids	39	3	36	8%	-1%	0	-3%	
19	Region	Chicago	16	1	15	6%	-2%	0	-4%	
20	Region	Los Angeles	18	1	17	6%	-3%	-1	-6%	
21	Product Group	Shoes	12	0	12	0%	-8%	-1	-11%	
22	Region	Houston	13	0	13	0%	-8%	-1	-12%	
23	Account Manager	William Davis	13	0	13	0%	-8%	-1	-12%	
24	Product Group	Shirts	25	1	24	4%	-4%	-1	-12%	
25	Product Group	Hats	37	2	35	5%	-3%	-1	-13%	
26	Product Group	Socks	20	0	20	0%	-8%	-2	-19%	
27										

Settings

Show

 All: Limit To:

100

Attribute:

<All>

Subsets:

999

Happy process: %

Month:

Process facts

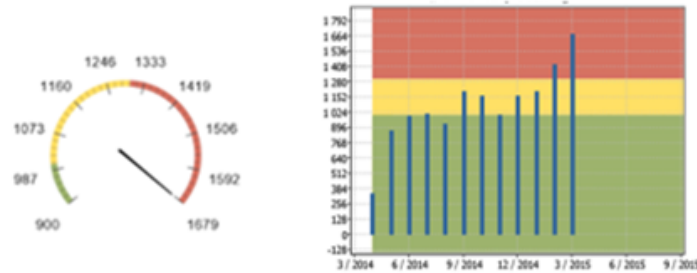
# of quotations	# of sales orders	# of shipments	# of invoices	# of returns	# of production orders
<input type="text" value=""/>	<input type="text" value=""/>	<input type="text" value=""/>	<input type="text" value=""/>	<input type="text" value=""/>	<input type="text" value=""/>

End to end lead time: # of h/d/w

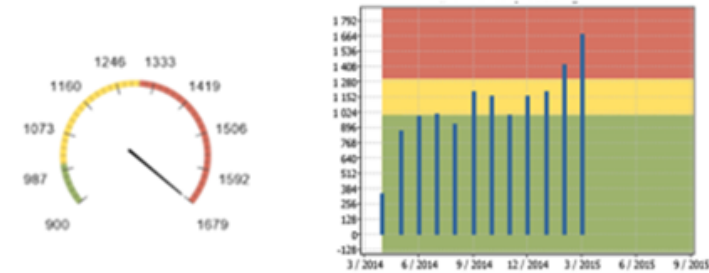
Order execution lead time: # of h/d/w

Delivery execution lead time: # of h/d/w

Happy flow (%)



Happy customer (%)



Order related changes

	12/2014	01/2015	02/2015	03/2015	04/2015
Total <u>order</u> related changes	#	#	#	#	#
# Confirmed production date changed	#	#	#	#	#
# Production priority changed	#	#	#	#	#
# Requested production <u>date</u> changed	#	#	#	#	#
# Line changed	#	#	#	#	#

Delivery related changes

	12/2014	01/2015	02/2015	03/2015	04/2015
Total <u>delivery</u> related changes	#	#	#	#	#
# Confirmed delivery date changed	#	#	#	#	#
# Delivery priority changed	#	#	#	#	#
# Requested <u>delivery</u> date changed	#	#	#	#	#
# Route changed	#	#	#	#	#

of process variations:

of process bottlenecks: